



psychology

A note from the Chair...

This past year has been filled with exciting changes and developments within the department, but we also have experienced challenges and sadness. In last year's newsletter we announced that Rod Wellens had stepped down as chair, and we celebrated his 22 years of achievement in that position. Sadly, at the very end of his tenure as chair, Rod was diagnosed with an advanced brain tumor that ultimately took his life last December. It is safe to say that Rod played a primary role in the history of psychology department, and he deserves much of the credit for its evolution into a top-ranked department. He was a terrific colleague and a dear friend to all of us, and we miss him greatly. You can read more about Rod and his contributions on page three of this newsletter.

I have just finished my first year as chair, and I am pleased to say that we have made great strides in further developing our excellence in research, teaching, clinical training, and community service. Importantly, this fall we welcome six new faculty members who bring expertise in developmental psychology, child and adult clinical psychology, neuroscience, and behavioral medicine. We

are pleased to welcome into our department Professor Steven A. Safren, Assistant Professor Aaron Heller (Adult/Cognitive Neuroscience), Assistant Professors Elizabeth Simpson and Lynn Perry (Developmental), and Research Associate Professor Anibal Gutierrez and Clinical Assistant Professor Melissa Hale (Child Clinical/CARD). These outstanding faculty members will strengthen our existing programs and allow us to undertake exciting new initiatives.

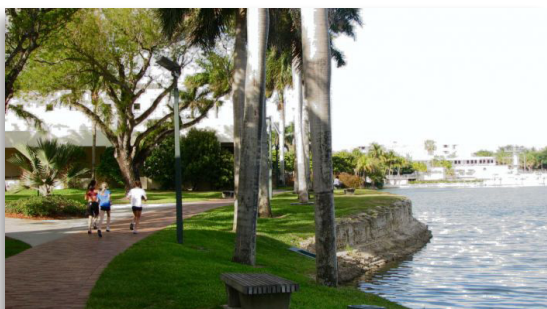
This past year we also had to say goodbye to Sean Kilpatrick, who was the Director of the Undergraduate Advising and Services for Psychology (UASP) office. Sean did a fantastic job overseeing undergraduate advising and academic issues for over 1000 Psychology and Neuroscience majors each year, and he was very popular with students, faculty and staff. He has taken a new position as Assistant Dean in the UM School of Nursing and we wish him well with his new career. Replacing Sean as Director of UASP is Leonard Clemons, who comes to us with extensive experience in undergraduate advising and student life. In the pages that follow you can



read about Leonard and the new faculty members, the accomplishments of our other faculty and graduate students over the past year, and catch up on what some of our alumni have been doing.

Let me thank you for your generous support of the department and its programs over the years. I look forward to working with you in the future.

Phil McCabe, Ph.D.
Professor and Chairman



UNIVERSITY
OF MIAMI
DEPARTMENT of PSYCHOLOGY



UNIVERSITY OF MIAMI PSYCHOLOGY Welcomes

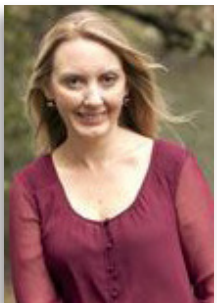


ANIBAL GUTIERREZ, PH.D.
RESEARCH ASSOCIATE PROFESSOR

Dr. Gutierrez is a Research Associate Professor and Associate Director of the Center for Autism and Related Disabilities (CARD) where he oversees research and behavioral services. He is also a Board Certified Behavior Analyst with experience in the assessment and treatment of severe

problem behavior and in the development of adaptive skills for individuals with autism. He received his B.S., M.S., and Ph.D. from the University of Florida.

Dr. Gutierrez's current research interests focus on early intervention, variables related to treatment effectiveness for individuals with autism, and the relationship between joint attention and preference for social reinforcers. Dr. Gutierrez has served as the site Co-PI for two federally-funded, multi-site studies evaluating school-based interventions and comprehensive treatment programs for students with autism spectrum disorders.



MELISSA HALE, PH.D., BCBA-D
CLINICAL ASSISTANT PROFESSOR

Dr. Hale is a Clinical Assistant Professor and Associate Director of CARD where she oversees psychological and educational services. Dr. Hale received a Ph.D. in School Psychology, from the University of Florida, in 2002, where she specialized in autism spectrum disorders and

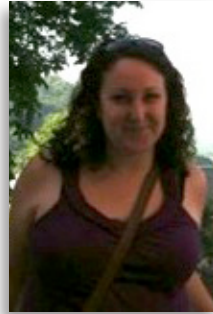
applied behavior analysis. She is also a licensed psychologist in Florida and a Board Certified Behavior Analyst (BCBA-D).



AARON HELLER, PH.D.
ASSISTANT PROFESSOR

Dr. Heller is interested in better understanding the temporal dynamics of positive emotion (i.e., how we sustain or don't sustain positive emotion) in depressed and healthy individuals. He uses a variety of methods including brain imaging (fMRI), psychophysiological

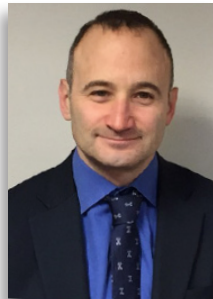
(facial EMG, skin conductance) and experience sampling (using smart phones) techniques to better understand emotion and psychopathology. Relatedly, he is interested in developing better methods to simultaneously acquire fMRI data with objective measures of emotion like facial EMG.



LYNN K. PERRY, PH.D.
ASSISTANT PROFESSOR

Dr. Perry received her Ph.D. in Developmental Science from the University of Iowa, and completed a Post Doc in the psychology department at the University of Wisconsin-Madison. Her research focuses on real-time and developmental interactions

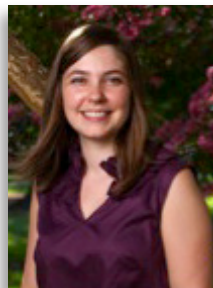
between labeling and categorization. She investigates the extent to which verbal labels causally impact cognitive processes over developmental and immediate timescales.



STEVEN A. SAFREN, PH.D.
PROFESSOR

Dr. Safren is a clinical health psychologist with expertise in health-related behavior change and a particular focus on psychosocial (mental health and substance use) comorbidities related to HIV prevention and treatment in both domestic and international settings.

He has been PI or protocol chair of 12 federally funded studies (via NIMH, NIDA, and NIAID). Currently, his funded work includes a preliminary study involving treating syndemics (intertwined psychosocial problems such as depression, childhood sexual abuse, substance use, interpersonal violence) in HIV-infected individuals with uncontrolled virus, a study on HIV prevention in men who have sex with men in two sites in India, and a pending effectiveness study on treating depression and improving adherence in HIV-infected individuals in South Africa who have failed first line antiretroviral therapy.



ELIZABETH ANN SIMPSON, PH.D.
ASSISTANT PROFESSOR

Dr. Simpson received her Ph.D. in Behavioral and Brain Sciences at the University of Georgia and completed a postdoctoral fellowship at the University of Parma in Italy and the Laboratory of Comparative Ethology at NIH. She studies early

infant social cognitive development by examining the ultimate and proximate mechanisms that shape individual differences in social perception.



Remembering

ROD

DR. ALBERT RODNEY WELLENS



Albert Rodney “Rod” Wellens, professor and long-time Chairman of the Department of Psychology who left an indelible mark on the university, the community, and the people he mentored passed away at home and surrounded by his family on December 17, 2014 after an illness. He was 68.

Dr. Wellens joined the university in 1972 and spent his career at the U. He became a full professor in 1988 and chair of the department in 1992, a post he held with distinction until 2014.

“Under the leadership of Dr. Rod Wellens, the Department of Psychology experienced incredible growth,” said Thomas J. LeBlanc, executive vice president and provost. “During his 22 years, a majority of the current faculty were hired, and psychology became the largest undergraduate major in the College of Arts and Sciences. He also ensured that community programs, such as the Center for Autism and Related Disabilities (CARD) and the Linda Ray

Intervention Center (LRIC), flourished. He was a consummate and generous academic leader for which the university and the college owe him an enormous debt of gratitude.”

“Dr. Wellens was a pillar of excellence and innovation in the college. Beyond academics, he cared deeply for the well-being of his students, faculty, and staff,” said Leonidas Bachas, Dean of the College of Arts and Sciences. “Under his leadership the Department of Psychology was recognized as one of the top departments nationally. He has transformed many lives at the U and in the community. I am honored to have known him as my colleague and friend. His legacy will live on.”

Michael Alessandri, Assistant Chairman for the department and Executive Director of CARD who worked with Dr. Wellens for nearly 20 years, called him “an inspirational leader and friend.” “He built a world-class psychology program with an emphasis on science but with

an understanding that science’s true value is only realized when it impacts the community in a meaningful way,” Alessandri said. The lives our faculty, staff, and students impact every day in our community are a testament to his vision. In recognition of our department’s extensive community engagement, the *American Psychological Association*, the largest scientific and professional organization representing psychology in the United States, honored the department’s efforts with the Culture of Service Award in 2008. “His memory will continue to motivate and inspire us.”

The department’s current chair, Dr. Philip McCabe, said Wellens was a thoughtful, compassionate leader whose wise judgment and strong academic values helped build the department into a top department nationally. “Those of us who worked closely with him admired his honesty, fairness, and dedication,” McCabe said. “On a personal level, he was a mentor to me and a dear friend, and I will miss him greatly.”

FACULTY NOTABLES

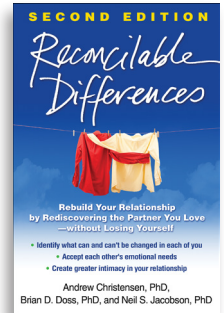
Dr. Michael Alessandri **WELLENS AWARD**

Dr. Michael Alessandri received the 2nd annual *Rod Wellens Service Award* in honor of his long-standing career commitment and outstanding service to the Department of Psychology, College of Arts and Sciences, and the university.



Dr. Brian Doss **NEW BOOK**

Reconcilable Difference is an adaptation of Dr. Doss' proven online program (www.OurRelationship.com) for couples experiencing difficulties in their relationship, which is in turn based on a successful in-person couple therapy approach (Integrative Behavioral Couple Therapy). Throughout the book, couples work to understand and solve relationship problems. The book includes questionnaires, tailored feedback, and exercises that readers can do on their own or together with their partners.



Dr. Michael Antoni **COOPER FELLOWSHIP**

Professor of Psychology
Michael Antoni, an expert on stress management and health outcomes, was named a *Cooper Fellow* by the College of Arts and Sciences.

Cooper Fellows receive three years of research and teaching support in recognition of their outstanding scientific achievements. This is one of the highest honors within the college.

Dr. Brian Doss **MUSE AWARD**

"The Victoria Noriega MUSE Cup for contributions to the undergraduate program is awarded to a faculty member who has made significant contributions to the undergraduate program throughout the past year. This year's recipient, Dr. Brian Doss, has mentored numerous students for research credit, Senior Honors Thesis, PRIME, and JUMPSTART. He leads the Undergraduate Curriculum Committee, co-coordinates our undergraduate summer research programs, plays a vital role in our on-going accreditation efforts, and handles all undergraduate course scheduling."



Dr. Annette La Greca **NEW BOOK**

Dr. Annette La Greca has a new book, *Social Anxiety and Phobia in Adolescents*, which she co-edited with international colleagues.

This volume brings together research into diverse aspects of social anxiety and its clinical form, social phobia, in adolescents. For more information see: www.springer.com/us/book/9783319167022



Dr. Michael E. McCullough **DOCTOR HONORIS CAUSA**

Dr. Michael E. McCullough, Professor of Psychology and Director of the Evolution and Human Behavior Laboratory, received the title of *Doctor Honoris Causa* of the Université catholique de Louvain, Department of Psychology and Education on April 30, 2015 in Louvain-la-Neuve, Belgium.



Dr. Kiara Timpano **TEACHING AWARD**

Dr. Kiara Timpano received the *Excellence in Teaching Award* from the Psychology Graduate Student Organization.



For more information regarding the UM Psychology FACULTY please visit us on the web at www.psy.miami.edu/about/announcements

CLINICAL PROGRAM

Annette M. La Greca, Ph.D., ABPP, Director

As you may recall from last year, the Clinical Program had its official Site Visit for APA Accreditation in April 2014. The APA Commission on Accreditation conducted their final review of our program materials last summer and in the fall we were notified that the program has been re-accredited for the maximum 7-year period! We are delighted with the outcome and thank all of you who participated in this important but time-consuming process.

The Clinical Program currently has 70 graduate students (26% ethnic minorities) in clinical psychology enrolled within the department, including 12 who began their clinical internships this summer. Everyone applying for clinical internships was placed during Match I and secured excellent placements. (See the list, to the right.) Also, last fall, we had our largest “first year” class in a while, with 16 new students admitted; however, this fall, the incoming class is much smaller (8 students across the program tracks).

A few notable adjustments were made to the Clinical Program over the past year. For one, we reviewed and changed the clinical qualifying procedures, moving away from an “exam based” process to one that is “competency based.” Beginning this year, students will prepare a portfolio of materials (CV in a standard format, essays on research interests and on clinical orientation), submit a first-authored empirical manuscript (within 4 months of starting Quals), and prepare a child or adult treatment case analysis. We feel this process will enhance students’ skill development

and, so far, the procedures have been well received by the students. A second change has been to reduce some of the course requirements for clinical students, while also trying to build more opportunities for exposure to research methods.

This fall, we welcomed two new clinical faculty to the department: **Aaron Heller** (Assistant Professor) in the Adult Division, and **Steven A. Safren** (Professor) in the Health Division.

Finally, we report our program data annually to APA, and we are significantly above “benchmarks”

for all our clinical and research outcomes, including: the percent of students who match with an APA-accredited internship; the percent of graduates who are licensed; the percent of current students who publish and present at meetings each year. If interested, check out the homepage for the Clinical Program and click on Student Admissions, Outcomes, and Other Data (www.psy.miami.edu/graduate/clinical_training/admissions_outcomes_other_data.pdf).

We enjoy hearing from our graduates, so don't forget to drop us a line!

2015 INTERNS

Kimberly Arditte

VA Medical Center, Boston, MA

Emily Becker

Children's Hospital of Philadelphia, Philadelphia, PA

Carrie Brintz

VA Medical Center, San Diego, CA

Sherilynn Chan

Children's Mercy Hospital, Kansas City, MO

Diana Chirinos Medina

Rush University Medical Center, Chicago, IL

Larisa Cicila

VA Medical Center, Tampa, FL

Christine Ghilain

Emory University, Atlanta, GA

Lisa Gudenkauf

University of Wisconsin, Madison, WI

Daniel Hall

Harvard Medical School Mass. General Hospital, Boston, MA

Ashley Malooly

Sharp Healthcare, San Diego, CA

Marcia McNutt

VA Medical Center, Miami, FL

Kelly Shaffer

Harvard Medical School Mass. General Hospital, Boston, MA

For more information regarding the **CLINICAL PROGRAM** please visit us on the web at
www.psy.miami.edu/graduate/clinical_training

Alexandra L. Quittner, Ph.D., Director

Kristin Lindahl, Ph.D. and Daniel Messinger, Ph.D., Associate Directors

We are very pleased to welcome two new developmental faculty to the Child Division: **Dr. Lynn Perry** and **Dr. Liz Simpson**. You can read about their interesting work in developmental psychology in the Psychology Welcomes section on page 2. We are very excited that both of these successful women are joining our division!

Faculty in the Child Division continue to be productive and win awards!

Drs. Ehrenreich-May and Jensen-Doss were recently awarded an R01 from NIMH to fund an effectiveness trial of interventions for adolescent anxiety and depression, testing whether the Unified Protocol for the Treatment of Emotional Disorders in Adolescence and enhanced monitoring and feedback will be more effective than community clinics' usual care. Dr. Jensen-Doss is also collaborating with Kristi House, Inc., Miami-Dade's child advocacy center, to evaluate their SAMHSA-funded community-based learning collaborative. This learning collaborative seeks to improve services for children in the child welfare system by increasing referrals to, and receipt of, evidence-based mental health services.

Dr. Michael Alessandri and new faculty member, **Dr. Anibal Gutierrez**, and their research team recently completed a multi-site IES-funded RCT evaluating Advancing Social-Communication and Play (ASAP), an autism preschool intervention, in collaboration with Miami-Dade County Public Schools and investigators at UNC-Chapel Hill.

Dr. Jennifer Britton, Director of the fMRI facility, has been actively recruiting subjects for her research studies in the Bridging Research on Anxiety, Innovations, and Neuroscience (BRAIN) Lab. She has

given educational presentations, both in the classroom and onsite at the neuroscience building, on anxiety and how MRI can be used to study the brain. In her role as Director of the fMRI facility, she has seen an increase in the number of scans by investigators from UM and Florida International University (FIU) and is building toward continued success.

Dr. Christine Delgado continues to direct the Children's Registry and Information System (CHRIS) project. She started a new project with the Florida Department of Health to examine the relationship between lead exposure and developmental disabilities and collaborated with the Institute for Education Sciences (IES) to create research partnerships with several early childhood agencies and the Miami-Dade County Public School to build infrastructure for on-going longitudinal research.

Dr. Brian Doss published an important new book, *Reconcilable Differences*, with his collaborator Dr. Andrew Christensen from UCLA. It "translates" their in-person and web-based couples intervention into a self-help format. His research on couples therapy for Veterans has demonstrated efficacy and was published in a top tier journal (*Journal of Consulting & Clinical Psychology*).

Dr. Daryl Greenfield's school readiness lab had a busy year collecting data on over 2000 children in the National Science Foundation (NSF) early childhood integrated science and engineering curriculum development project Partnerships for Early Childhood Curriculum Development: Readiness through Integrative Science and Engineering (RISE). He and his team are also working on IES projects to develop touch screen computer

adaptive early childhood science assessments. They are also working with the Miami United Way in the National Educare Implementation Study. He was also funded by the Buffett Early Childhood Fund for his work on a mentor-coaching model.

Dr. Melissa Hale was recently appointed to the faculty and provides clinical services at CARD and Autism Spectrum Assessment Clinic (ASAC). In 2015, she, along with **Dr. Jennifer Durocher** received a community service grant through The Children's Trust to provide psychological evaluations to young children suspected of having ASD.

Dr. Annette La Greca and her lab finished data collection for her National Institute of Mental Health (NIMH) grant on preventing social anxiety and depression among adolescents who are peer victimized (the UTalk program). Preliminary findings, presented in London, suggest significant mental health benefits, especially for girls. Dr. La Greca is also a contributor to the Interagency Report for President Obama on the impact of climate change on health in the US.

Dr. Kristin Lindahl's research continues to study families as systems, examining links between dimensions of family functioning and youth development. Data from the Coming Out Project, examining the impact of family functioning on the coming out process for Lesbian, Gay, & Bisexual (LGB) youth, has been the main focus.

Dr. Daniel Messinger investigates the emotional dynamic of early parent-child interactions among typical and atypically developing children using objective measures. He is funded

~Child Division continues on page 7

For more information regarding the **CHILD DIVISION** please visit us on the web at
www.psy.miami.edu/graduate/clinical_training

ADULT DIVISION

~Child Division~

by several agencies, including National Institutes of Health (NIH) and National Science Foundation (NSF), and published a number of papers last year (Emotion, Molecular Autism) with his stellar graduate students.

Dr. Alexandra Quittner completed the The International Depression Epidemiological Study (TIDES) screening over 6000 patients with cystic fibrosis (CF) and 4100 patient caregivers in 9 countries, which led to chairing an international guidelines group on mental health in CF. These guidelines will change care for patients with CF and parent caregivers in North America and Europe. A new grant evaluates the psychometric properties of a GI Symptom Tracker, and her research team is developing the first quality of life measures for deaf children receiving cochlear implants.

Dr. Rebecca Bulotsky-Shearer evaluated her new, IES-funded web-mediated social-emotional intervention called Learning to Objectively Observe Kids (LOOK) in 45 Miami-Dade Head Start and public school prekindergarten classrooms. She was funded by The Children's Trust to develop resources to foster home-school connections and increase participation in LOOK. She is continuing her work at several agencies, including Miami-Dade Public Schools, The Early Learning Coalition, and The Children's Trust to develop data linkages between school readiness and early childhood participation in Miami-Dade County.

Dr. Saneya H. Tawfik, Director of the Psychological Services Center (PSC), has had another successful year running the UM Program for Emotional Problems in Children (PEP-C) group treatment programs for at-risk Miami-Dade County Public School children.

Pre-post data indicating that culturally-informed Cognitive Behavior Therapy (CBT) for vulnerable and ethnically diverse youth have positive effects were presented at the American Psychological Association Conference.

Charles S. Carver, Ph.D., Director
Amy Weisman de Mamani, Ph.D., Associate Director

The Adult Division mourned the passing of **Dr. Rodney Wellens**, former department chair and a core faculty member in our division since 1972. On the positive side, we are delighted that **Dr. Aaron Heller** joined the division after completing his internship and postdoc at Weill Cornell Medical College in New York City. He is eager to continue his research investigating the neurobiological processes underlying positive emotion processing in depression and well-being

Dr. Charles Carver has enjoyed a refreshing and renewing year at the Center for Advanced Study in the Behavioral Sciences at Stanford University. The center annually hosts a diverse assortment of scholars from the behavioral sciences (psychologists, sociologists, political scientists, economists, anthropologists, philosophers, and scholars of law and communication) for a 10-month period at an idyllic hilltop setting above Stanford University. The diversity allows for cross-fertilization of ideas across the multiple disciplines and the setting inspires creativity. During the year, Dr. Carver also made invited presentations in Beijing China, and in Seoul Korea.

Dr. Michael E. McCullough was the recipient of an honorary doctoral degree (Doctor Honoris Causa) by the Catholic University of Louvain (UCL) in Belgium. He and his wife attended the awards ceremony in May 2015. In addition to continuing to publish research on topics such as religion, self-control, cooperation, revenge, and forgiveness, Dr. McCullough continued to blog about psychology at www.social-science-evolving.com. He is hard at work on a book about the evolutionary and cultural foundations

of human generosity, which he hopes to finish in the next 24 months.

Dr. Amy Weisman de Mamani completed data collection on two projects this past year. One study examined the efficacy of a culturally informed family therapy for schizophrenia. The primary outcome paper was published in the *Journal of Family Psychology* and was cited in the January 2015 edition of the APA Monitor. She also completed data collection on a study involving dementia caregivers. Findings illustrate that greater perceptions of free will and greater usage of religious forms of coping were both independently associated with greater quality of life in caregivers. Dr. Weisman de Mamani presented this research at the 8th Annual Interprofessional Geriatrics Training Institute in May 2015.

Dr. Kiara Timpano is conducting several investigations that examine risk factors for hoarding and OCD, including a neuroimaging investigation of decision making difficulties and a study on emotional processing. She was recently awarded a Miami Clinical and Translational Science Institute Grant Resubmission Award, and was honored to be invited to the Scientific and Clinical Advisory Board of the International Obsessive Compulsive Disorder Foundation.

Dr. Debra Lieberman was on sabbatical Fall 2014-Spring 2015. She has been working with her graduate students on how family relationships affect forgiveness, a project funded by a John Templeton Foundation grant awarded to Dr. McCullough, and how states of anger and jealousy impact moral judgement.

For more information regarding the **ADULT DIVISION**
please visit us on the web at
www.psy.miami.edu/graduate/adult

Neil Schneiderman, Ph.D., Director and Marc Gellman, Ph.D., Associate Director

Dr. Michael Antoni, Professor of Psychology, and Survivorship Theme Leader in Cancer Prevention Control and Survivorship at the Sylvester Cancer Center, conducted a Florida Breast Cancer Foundation study to examine psychoneuroimmunologic mechanisms underlying the effects of stress management on adaptation and health in distressed women with breast cancer. He also led an ongoing National Institute of Neurological Disorders and Stroke (NINDS) clinical trial testing the effects of videophone-delivered Cognitive Behavioral Stress Management (CBSM) on physical symptoms and neuroimmune processes in patients with chronic fatigue syndrome (CFS) and their partners.

Dr. Antoni serves as Associate Editor of two international journals, *Psychology and Health*, and the *International Journal of Behavioral Medicine*, received the *Cooper Fellow Award* from the UM College of Arts & Sciences, chaired the Health Psychology faculty search, co-directed the Miami CTSI Pilot and Translational Studies Component, and served on the Maytag Fellowship selection committee and on the Sylvester Cancer Center's Scientific Steering Committee.

Dr. Marc Gellman serves as the Project Manager for the Hispanic Community Health Study/Study of Latinos (HCHS/SOL), which was renewed by the NIH through 2019. During the past year he completed the HCHS/SOL Ancillary Study, Study of Latinos - Nutrition & Physical Activity Assessment Study (SOLNAS). He is the co-author on research papers stemming from work on the HCHS/SOL that have been published in the past year in *Circulation*, the *American Journal of Clinical Nutrition*, and the *American Journal of Epidemiology*. Dr. Gellman serves as Editor-in-Chief of the *Encyclopedia of Behavioral Medicine*.

Dr. Monica Webb Hooper is an Associate Professor and member of the Cancer, Prevention, Control, and

Survivorship Program at the Sylvester Comprehensive Cancer Center (UM/Sylvester). She is also the leader of the Prevention and Early Detection program theme. Her current research examines genetic and personality factors as predictors of success in a group cessation intervention, best practices for behavioral tobacco interventions among African American smokers, and understanding relationships between race/ethnicity, cultural variables, the biological stress response and cessation. Dr. Webb Hooper was recently awarded a \$1.9 million grant from the James and Esther King Biomedical Research Program, Florida Department of Health, to address smoking cessation disparities among adults in the community. She is also expecting her 3rd child in November 2015.

Dr. Gail Ironson, Professor of Psychology and a Board Certified Psychiatrist, is site Principal Investigator (PI) for: (a) an NIMH randomized clinical trial to reduce post-traumatic stress disorder (PTSD) and risky sexual behavior in men who have sex with men; and (b) a national study funded by the Templeton Foundation to examine relationships between Spirituality and Health. Dr. Ironson continues to lead the department's Trauma Treatment program and to publish her 17 year longitudinal study of stress and coping in HIV/AIDS.

Dr. Amishi Jha's lab has multiple recent publications disseminating their work on mindfulness-based training and the neurobehavioral correlates of stress and resilience. Dr. Jha has been asked to serve on the Brain Health Working Group by the Office of the US Army Surgeon General, and she recently briefed the White House's Joint Forces Initiative regarding her new grant project investigating mindfulness and compassion training in military spouses.

Dr. Youngmee Kim's research focuses on the quality of life of cancer patients/survivors and their family caregivers. Aside from her high level of research productivity, Dr. Kim continues serving as an invited reviewer for numerous journals as well as the *National Cancer Institute*, *American Cancer Society*, *Dutch Cancer Society*, and *Flanders Research Foundation* in Belgium. She has also been an invited speaker at Beijing University in China, Yonsei University in Korea, and University of California, Los Angeles. Dr. Kim enjoyed her sabbatical year at the Center for Advanced Study in the Behavioral Sciences at Stanford University.

Dr. Maria M. Llabre is now Associate Chair and Director of Graduate Studies in the psychology department. She was also appointed Secretary of the Academy of Behavioral Medicine Research for another three year term. Dr. Llabre continues to publish major articles in prestigious peer-review journals.

Dr. Liz Losin joined the Health Division as an Assistant Professor in January 2015. As Director of the Social and Cultural Neuroscience Laboratory she is currently studying the influence of the doctor-patient relationship on pain perception and is also active in the brain imaging group.

Dr. Roger McIntosh had another very productive year as a Research Assistant Professor and has now been appointed to a tenure-line position as an Assistant Professor. His research focuses on emotional regulation, as well as neurophysiological and immune processes in HIV/AIDS.

Dr. Patrice Saab, is PI of an NIH funded Science Education Partnership award that promotes a healthy lifestyle in middle school girls and their families. Dr. Saab also directs UM Reducing Obesity in Students Everywhere (UROSE), a community service

~Health Division continues on page 9

For more information regarding the **HEALTH DIVISION** please visit us on the web at www.psy.miami.edu/graduate/health

project targeting obesity prevention in children. She also serves as Chair of the Education and Training Council of APA's Division of Health Psychology.

Dr. Steven A. Safren, formerly Professor of Psychology and Psychiatry at Harvard Medical School and Director of Behavioral Medicine in the Department of Psychiatry at Massachusetts General Hospital is our newest professor in the Health Division. In August 2015, he received a new R01 grant which is a nurse-delivered effectiveness trial of cognitive behavioral therapy for adherence and depression in individuals with HIV who have failed first-line antiretroviral therapy in townships around Capetown, South Africa, and suffer from major depression. This project is a collaboration with the University of Capetown and Massachusetts General Hospital.

Dr. Safren received a Pioneer Award for Outstanding Contributions to HIV Adherence Science/ Practice from the International Association for Providers of AIDS Care (IAPAC). He was also recently appointed as the Publications Committee Chair for the Association for Behavior and Cognitive Therapies (ABCT) journals.

Dr. Neil Schneiderman, Director of the Division of Health Psychology, is the PI of the NIH funded Miami Field Center of the (HCHS/SOL), Director of an NIH NHLBI Institution Research Training Grant and Director of the Research Training and Career Development Program of the University of Miami Clinical and Translational Science Institute. He has begun his 51st year as a faculty member in the Department of Psychology.

Dr. Lucina Uddin recently received a BRAINS R01 grant from the NIMH on Cognitive and Neural Flexibility in Autism. She is currently organizing a conference (Brainhack 2015) that aims to bring together neuroimaging researchers at UM and FIU (funded by Flipse funds recently received). She continues to publish at a high rate in top-tier peer reviewed journals including (in 2015) *Nature Reviews Neuroscience*, *Trends in Neurosciences*, *Developmental Science*, *Developmental Cognitive Neuroscience*, *Autism Research*, *NeuroImage: Clinical*, *Neuropsychologia*, and *Cerebral Cortex*.

TEACHING FACULTY

The Department of Psychology counts among its most valuable faculty a cadre of individuals who have dedicated their careers to teaching, especially at the undergraduate level. These individuals, along with tenured and tenure-track faculty, graduate students, and part-time faculty carry the bulk of the teaching load here in the department. The presence of these individuals not only enhances our teaching expertise but also frees tenure-track faculty to devote more time to their research and to mentoring both graduate and undergraduate students.

Rod Gillis, Ph.D., has been a full time member of our teaching faculty since 1993. He has taught many classes including introductory psychology, social psychology, child and adolescent development, introduction to biobehavioral statistics, intermediate statistics, and the experimental social and personality laboratory. Dr. Gillis shares his expertise in the classroom by conducting workshops for our first time graduate student instructors and has extended his range to teaching the introductory graduate statistics class as well.

Veronica A. Fernandez, Ph.D., is the newest member of our full time teaching faculty. She earned her PhD in December of 2014 right here at UM! She teaches Statistics and Advanced Research Methods. She also continues to collaborate on research with Dr. Rebecca Bulotsky-Shearer and Dr. Daryl Greenfield, focused on improving the school readiness and long-term outcomes of Head Start children. She has served on Honor's Thesis committees and mentored a PRIME student this past summer.

Frank Foote, Ph.D., has been with the department full-time since 2004. He enjoys teaching introductory statistics and human sexual behavior every semester and at various times

also teaches abnormal, industrial/organizational, personality, and social psychology. Outside of teaching, he has a small private practice working with couples and also provides individual therapy with adults. He has served as President of the Miami-Dade/Monroe Counties Psychological Association and is currently on the Board of Directors of the Florida Psychological Association. He is an enthusiastic supporter of Hurricane football and women's basketball. *Go Canes!*

Rick Steutzle, Ph.D., has been with the department since 1999. He primarily spends his time teaching statistics and research methods, as well as tests and measurements and other courses as needed. In addition, he collaborates with Dr. Gail Ironson in her Positive Survivors Lab, examining psychosocial predictors of disease progression in HIV-positive patients. He has served on several thesis and dissertation committees, and as part of the Undergraduate Curriculum Committee he is working to modify and improve the curriculum and experience for psychology majors.

We also have a dedicated group of individuals who devote time to teaching including **Michael DiTomasso, Blanche Freund, Hillary Hoffman, Elyse Hurtado, Jill Kaplan, Amy Schaffer** and **Barry Zwibelman**.

For more information regarding the **TEACHING FACULTY** please visit us on the web at
www.psy.miami.edu

GRADUATE NEWS

GRADUATE STUDENT ANNUAL AWARDS



BERTHA WEBER AWARD

ASHLEY SHAW

In appreciation of service to the department.



DR. CAROL ALSON FINEMAN AWARD

SHERILYNN CHAN

In support of research dealing with children who have been abused or who present with emotional disturbances.



**DR. KEITH G. SCOTT - CARD
GRADUATE AWARD (DEVELOPMENTAL)**

KATHERINE MARTIN

For the graduate student who has demonstrated excellence in developmental research in autism.



**DR. PETER MUNDY - CARD
GRADUATE AWARD (CLINICAL)**

HOA LAM SCHNEIDER

For the graduate student who has demonstrated excellence in clinical research or treatment in autism.

OUTSTANDING TEACHING ASSISTANT AWARDS



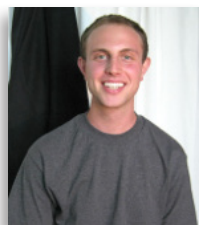
JOHAYRA BOUZA



VANESA RINGLE



SARAH KENNEDY



MARC WEINTRAUB

ROD GILLIS AWARD

For excellence in undergraduate teaching.

KIRK R. DANHOUR MEMORIAL AWARD



ANDRES BUSTAMANTE

Child Division



LISA GUDENKAUF

Health Division



ASHLEY SHAW

Adult Division

The *Kirk R. Danhour Memorial Award* is awarded each spring to one fourth year graduate student from each of the department's three divisions. Students are selected by the faculty based on outstanding academic performance, progress and quality of research, leadership, social integration, involvement in departmental activities, and development of clinical skills (if applicable).

FLIPSE FUNDING AWARDS

Funds from an endowed gift to the Department of Psychology from the Flipse Family are granted to faculty and graduate students on a competitive basis each year to support research.



Alexandra Alexander

“Pedagogical Content Knowledge for Preschool Science”



Hoa Lam

“Socio-Emotional Adjustment in Couples with Children with Autism Spectrum Disorders: Dyadic and Individual Effects of Autism Severity in Mothers and Fathers”



Catherine Burrows

“Psychophysiology of Self-Referenced Processing in Children”



Kelly Shaffer

“Dyadic Study of Depression on Inflammation and Diurnal Cortisol Variation in Cancer Patients and Caregivers”



Michael Hoffman

“Health-Related Quality of Life Instrument for Deaf Children with Cochlear Implants: Development of Child and Parent Proxy Measures”



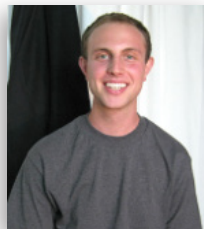
Ashley Marie Shaw

“The Role of Negative and Positive Emotional Reactions in Hoarding Symptomatology”



Liana Hone

“Drinking Games as a Venue for Sexual Competition Mediated by Testosterone Levels”



Marc Weintraub

“Physiological and Mood Reactivity to High Expressed Emotion in Individuals at Risk for Schizophrenia”

FACULTY Funding Awards



Dr. Amanda Jensen-Doss

“Predictors and Outcomes of a Community-Based Learning Collaborative in the Child Welfare System”



Dr. Debra Lieberman and Dr. Michael McCullough

“Investigation of How Interpersonal Value and Gratitude Affect the Initiation of Cooperative Relationships”



UNDERGRADUATE NEWS



The **Undergraduate Academic Services for Psychology (UASP)** worked hard this year to continue to enhance their high-quality advising services. The Department of Psychology's

undergraduate programs are the largest in the university with over 625 psychology majors and 280 neuroscience majors. The Director of Undergraduate Academic Services, **Sean Kilpatrick**, and advisors, **Alida Lambert** and **Nicole Laviña**, worked closely with the **Peer Advising Liaisons (PALs)** to help students take full advantage of their undergraduate opportunities by developing graduation plans, exploring research opportunities, and preparing for graduate school and/or future careers. UASP also launched several new initiatives to help students further connect with their on-campus career planning resources, including Toppel@UASP.



Contact Term) seminars, students met weekly with the Director of Undergraduate Academic Services, an Advisor, and a PAL to discuss academic advising, academia, research, curriculum planning, campus resources, and post-baccalaureate options. In the spring, students participated in FORUM (Faculty Overview of Research and Undergraduate Mentoring) where they met weekly with a psychology or neuroscience faculty member to learn about the research process in general, the faculty member's research, and the different research opportunities available at the University. Thank you to Drs. **Bramlett, Britton, Hurwitz, La Greca, May, McCullough, Messinger, Timpano**, and **Uddin** for mentoring our FORUM students.

Twenty-five students who transferred to the university as a psychology or neuroscience major participated in TUMS (Transfer to the University of Miami). This one semester course is similar to FACT FORUM but is specially tailored to the unique needs of the transfer students and designed to help ease their adjustment to the university.



Peer Advising Liasons (PALs)

The PALs are integral members of the UASP team. These 16 student employees serve as the connection between the undergraduate students and

the professional advising staff. Over the last year, the PALs worked with the advisors to develop a social media presence, generate ideas for website development, provide students with information on graduate study, and much more. Congratulations to the 2014-2015 PAL graduates, **Gabriel Jimenez-Garcia, Rachel Lopez**, and **Rachel Martin**.



New Toppel Career Center Partnerships

UASP partnered with the Toppel Career Planning and Placement Center at the beginning of the Fall 2014 semester to dispel the myth that Toppel is "only for business students" and to enhance psychology and neuroscience students' awareness and use of the many

career services available to them at the University. In October, Toppel and UASP launched the first ever *Psych and Neuroscience Meet-Up* for students to network with employers from a variety of fields who regularly hire psychology and neuroscience majors. Over 100 students and 20 employers attended this inaugural event, making it a tremendous success!

For the Spring 2015 semester, UASP and Toppel collaborated to develop and launch Toppel@UASP where two Toppel Career Advisors set up shop in the UASP office one day each month to provide career-focused advising services specifically for psychology and neuroscience students. Students were able to schedule appointments or walk in to see a career advisor to discuss their career goals, learn about internship opportunities, get a resume critique, and much more.



Academics

The Department of Psychology carried one of the heaviest teaching loads in the university throughout the 2014-2015 academic year. Our faculty taught the third highest number of credit hours, accounting for approximately 10% of the hours taught in the College of Arts and Sciences and nearly 5% of the hours taught in the university.

FACT FORUM and TUMS

Every year UASP welcomes hundreds of new students to the university and works closely with them during their first year through the department's orientation, advising, and mentoring programs, FACT FORUM and TUMS. Over 130 freshmen participated in FACT FORUM this past year. During the fall FACT (Freshmen Advising

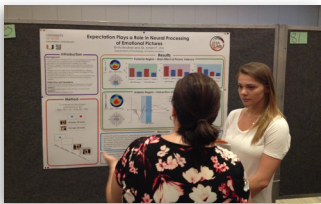
UNDERGRADUATE NEWS

Research

Roughly half of the 2014-2015 psychology and neuroscience graduates participated in research for credit during their time at the university. Twenty-seven of these students completed Senior Honors Theses and earned Departmental Honors. Others presented their research at national conferences and some students turned their work into publications.



On Tuesday, March 31st, students presented their Senior Honors Theses and PRIME projects at the university's annual Research, Creativity, and Innovation Forum (RCIF). Three psychology majors placed in the top three in their respective categories: **Sarah McGriff** placed 3rd in the Biological Sciences category, **Emily Brudner** placed 2nd in the Social Sciences category, and **Danielle Morabito** placed 3rd in the Social Sciences category. Neuroscience major **Daniel Parker** also placed 1st in the Humanities category.



Four psychology and neuroscience majors participated in the 10th annual ACC Meeting of the Minds Undergraduate Research Conference from April 10-12 at North Carolina State University in Raleigh, North Carolina. Thank you to **Emily Brudner, Haley Edwards, Anna Ivanova, and Kinjal Thakor** for representing our department.

For the 18th consecutive year, the department, with support from the Fred C. and Helen Donn Flipse Endowment, hosted the PRIME (Psychology Research Initiatives Mentorship Experience) and JUMPSTART (Just for University of Miami Psychology Students to Accelerate Research Training) summer research programs. Throughout these 10 week programs, 10 PRIME students and 2 JUMPSTART students devoted at least 20 hours a week to a their faculty member's research. Special thanks to **Drs. Fernandez, Hooper, Jensen-Doss, May, McCullough, Messinger, Quittner, Shearer, and Timpano** for serving as PRIME and JUMPSTART mentors.



Eight advanced neuroscience majors took part in the Lois Pope Summer Research Fellowship during Summer 2015. These students worked as full-time Research Assistants with a neuroscience faculty member throughout the 10 week program. Thank you to **Drs. Bullock, Dave, Lemmon, McCabe, Mendez, Skromne, Uddin, and Young** for mentoring our Lois Pope students.

Graduates

The department congratulated over 200 psychology first, second, and third majors, as well as over 60 neuroscience majors on their graduation during the Fall 2014 and Spring 2015 Semesters. Four of these students were presented with special awards during the department's Spring Graduation Party:



Caela Cohen received the *Outstanding Scholarship in Psychology Award* for outstanding scholarship in psychology during his/her time at the university.

Samuel Powell received the *Outstanding Scholarship in Psychology Award* for excellence in all aspects of the neuroscience program.

Erica Lehman received the *Eber Award* for outstanding scholarship of a student beginning a doctoral program following graduation.

Andrea Lafnitzegger received the *Psi Chi Award* for significant contributions to the Psi Chi honor society.

OTHER NEWS

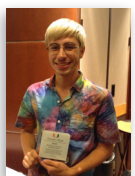
2nd Annual Sunposium

Six undergraduate neuroscience majors, **Shreya Chidarala, Jorge Gonzalez, Shivani Hanchate, Albert Liu, Nidhi Patel, and Katryna Thomas** accompanied Dr. Coleen Atkins to the 2nd annual Sunposium, which was hosted by the Max Planck Institute at the PGA Hotel in West Palm Beach, FL.



2015 UM Student Employment Awards

The 2015 University of Miami Student Employment Banquet was held on April 16th in the Hurricane 100 Room at the Bank United Center. Director of Undergraduate Academic Services, Sean Kilpatrick, was the keynote speaker and 2nd year PAL, **Rachel Martin**, was recognized as a Student Employee of the Year nominee for her hard work and dedication to the UASP office. Sophomore psychology major, **Christopher Albright**, also received the Miami Commitment Newcomer Award and senior neuroscience major, **Hope Hua**, received the Miami Commitment Senior Award.



UNDERGRADUATE NEWS

Psi Chi, the National Honor Society in Psychology

The university's chapter of Psi Chi, the National Honor Society in Psychology, worked hard this year to provide undergraduate students with in-depth exposure to the field of psychology. Psi Chi President, **Andrea Lafnitzegger**, collaborated with faculty advisor, **Dr. Jennifer Durocher**, and her executive board to strengthen Psi Chi membership and participation, and to increase its overall visibility on campus by holding several faculty discussions, hosting the annual Research Recruitment Fair, and participating in numerous on- and off-campus service projects (e.g., Hilarity for Charity and WalkAbout Autism).



The Undergraduate Neuroscience Society (TUNS)

The Undergraduate Neuroscience Society (TUNS) strives to promote interest in neuroscience by educating students about the field and connecting students with resources in the Miami area. This year, President, **Roxanne Mayrand**, worked closely with the executive board and faculty advisor, **Dr. Helen Bramlett**, to host several guest lectures, participate in the Miami Brain Fair, and reestablish the Neuroscience Faculty-Student Mixer.

2015 Psychology and Neuroscience Phi Beta Kappa Inductees

Christopher Albright
Yusuf Ali
Rachel Berquist
Monica Bodenshtab
Angela Carracino
John Donnelly
Rebecca Dreizen
Virginia Gonzalez
Anna Ivanova
Savannah King
Kayla Kistler

Erica Lehman
Marigloria
Maldonado-Puebla
Lissa Mandell
Hanna Mathers
Joseph Miano
Jamie Nucho
Anna Shah
Salvatore Spinelli
Tatsumi Yanaba

2015 PRIME Summer Research Fellows

Christopher Albright worked with Dr. Monica Webb Hooper
Rachel Berquist worked with Dr. Alexandra Quittner
Taylor Ellington worked with Dr. Rebecca Shearer
Lauren Friedman worked with Dr. Jill Ehrenreich May
Rachel Fritz worked with Dr. Amanda Jensen-Doss
Maria Jimenez worked with Dr. Rebecca Shearer
Lissa Mandell worked with Dr. Daniel Messinger
Claudia Perez worked with Dr. Veronica Fernandez
David Sifri worked with Dr. Kiara Timpano
Alexander Snihur worked with Dr. Michael McCullough

2015 JUMPSTART Summer Research Fellows

Abigail Johnson worked with Dr. Kiara Timpano
Hailee Zeichner worked with Dr. Rebecca Shearer

2015 Lois Pope Neuroscience Summer Research Fellows

Raisa Ahmed worked with Dr. Armando Mendez and Dr. Phil McCabe, Psychology
Mirza Baig worked with Dr. Ross Bullock, Neurosurgery
Jessica Cothorn worked with Dr. Isaac Skromne, Biology
Anna Ivanova worked with Dr. Lucina Uddin, Psychology
Allen Liu worked with Dr. Kunjan Dave, Neurology
Michael Ortega worked with Dr. Vance Lemmon, Neurosurgery
Andrew Siladi worked with Dr. Juan Young, Hussman Institute for Human Genetics
Benny Tom worked with Dr. Isaac Skromne, Biology

FOLLOW UASP

Check out UASP on social media for updates and reminders about departmental events, undergraduate psychology and neuroscience advising, research opportunities, professional development, and more.



Follow them @UASP



Subscribe to their channel at UASP UM



WELCOME Leonard Clemons the new Director of UASP. Leonard originally from Chicago has held positions dealing with advising and student life at the University of Illinois, Northern Illinois University, and Miami-Dade College. Most recently, he was the Interim Director of Student Life at Miami-Dade College-West. Leonard is a very pleasant, engaging and energetic individual, and he brings a great deal of experience to this position. *We are fortunate to have him at the UASP.*

COMMUNITY OUTREACH DIVISIONS



UM-NSU CARD continued to provide high-quality free support and outreach services to people with autism spectrum disorders, dual sensory impairments, and related disabilities across Miami-Dade, Broward and Monroe Counties. **We now have over 9,000 families registered** with our center. Services include (1) individualized family support; (2) programmatic technical assistance and consultation; (3) parent and professional training programs; and (4) public education and awareness activities.

CARD is pleased to announce several important promotions over the past year. **Dr. Melissa Hale** was appointed to the faculty as a Clinical Assistant Professor in the Department of Psychology and has also assumed the role of CARD's Associate Director of Psychological and Educational Services. **Dr. Meaghan Parladé** was promoted from her postdoctoral position and now serves as CARD's Intervention Services Coordinator. Finally, **Sara Dajer** was promoted from her position as Case Manager to CARD's Manager of Educational Support Services.

CARD is also excited to announce that **Dr. Anibal Gutierrez** has just returned to the University of Miami, where he now serves as Research Associate Professor in the Department of Psychology, as well as CARD's Associate Director of Research and Behavioral Services. Under Dr. Gutierrez's guidance, we have just opened the Intensive Behavioral Intervention Services (IBIS) clinic, a CARD-affiliated ABA intervention program for young (2-3 years of age) children with ASD.

In addition, we are also happy to welcome a number of new staff to our program, including **Tresha Barrett & Jennifer Feinstein** (Transition & Adult Services), **Silvia Gil**, **Ivan Deveaux & Shelley Duran**

(Educational Support Services), and **Dr. Sandra Cardona** (Psychological Services).

We have also been fortunate to receive a number of grants this past year. CARD's grant from the Florida Department of Education was continued for the 23rd consecutive year. CARD has also received funding from The Children's Trust (TCT) for several different projects. Our summer camp for high-functioning children in the autism spectrum was renewed for another 3 years, and we were awarded another grant to support evaluation services for children under 5 referred through Miami-Dade County Schools. We also are receiving support from UM's Mailman Center for Child Development to be a site for their TCT-funded Parent-Child Interaction Therapy (PCIT) grant. In addition, UM neuroscientist **Dr. Lucina Uddin** was awarded an NIMH R01 grant to study neural connectivity in autism. **Dr. Michael Alessandri**, **Dr. Meaghan Parladé** and **Dr. Amy Beaumont** are also working on this project.

In addition to grant funded projects, CARD was the beneficiary of several major gifts this past year including a naming gift from the Daniel Jordan Fiddle Foundation. As of December 2014, CARD's services and programs for teens and adults are now provided as part of CARD's Daniel Jordan Fiddle Adult and Transition Programs. For more information about UM-NSU CARD, please visit www.umcard.org.



Dr. Jennifer Durocher is happy to report that **Dr. Melissa Hale** will now be the faculty member overseeing the Autism Spectrum Assessment Clinic (ASAC) as part of her role as Clinical Assistant Professor in the Department of Psychology. ASAC is a specialty clinic within the Department of Psychology, dedicated to providing diagnostic and psychoeducational

evaluations, individual cognitive-behavioral therapy, and social skills groups for individuals with autism and other social-communicative difficulties.

Under the direct supervision of **Dr. Amy Beaumont**, ASAC serves as an evidence-based training clinic for a number of graduate-level practicum students and interns in best-practice assessment and treatment approaches for ASD. ASAC has once again had a successful match for our rotation for the Mailman Center's Internship Program in Clinical Child and Pediatric Psychology. **Bridget Davidson** will be joining ASAC as a psychology intern in the fall of 2015. Bridget comes to us from the Doctoral Program in Clinical Psychology at University of Texas at Austin and we are happy to have her joining us.



Dr. Saneya H. Tawfik, Clinic Director/Director of Assessment Services and Clinical Assistant Professor, as well as **Dr. Judith Rey McCalla**, Assistant Director and Staff Psychologist, are both Licensed Psychologists at the Psychological Services Center (PSC). This past year, Dr. Tawfik presented nationally on diversity among training clinics providing assessment services to clients of culturally and linguistically diverse backgrounds, and overseeing a meta-supervisory practicum in assessment. Dr. McCalla recently co-authored an article entitled, Translation of the Diabetes Prevention Program to Ethnic Communities which appears in *Journal of Immigrant and Minority Health*.

Dr. Tawfik and Dr. McCalla provide supervision and training for all Clinical Psychology graduate students. In addition, under the supervision of Dr. Tawfik, Advanced Assessment Practicum graduate students gain further training in assessment and supervision skills. Students in this group receive competence-based training on how to mentor beginning

COMMUNITY OUTREACH DIVISIONS

students learning to administer assessments. Additionally, students provide services to the more complex assessment clients referred to the PSC. The following Clinical Psychology doctoral students, representing all three divisions, participated in this group this past year: **Emily Becker, Casey Burrows, Sherilynn Chan, Larisa Cicila, Michael Hoffman, Devika Jutagir, Hoa Lam, and Ashley Smith.**

During this past year we also had a variety of groups, supervised by Dr. McCalla, offered to adults in our community. The Coping Skills Training Group, for individuals feeling overwhelmed with the stressors in their lives, was expanded to a 12-week group that was co-led in Fall 2014 by **Calvin Fitch** and **Karin Garcia**, and in Spring 2015 by **Laura Bouchard** and **Julia Carbonella**. For the first time, the PSC offered groups in the summer. **Josh Rooks** and **Aurelie Lucette** led an 8-week Social Anxiety Group during May and June of 2015. An additional Social Anxiety group is scheduled for late summer and a Coping Skills Training Group is set for the Fall 2015. Lastly, we are planning to conduct a Healthy Lifestyle Group in Spring 2016. This is a 12-week intervention that focuses on improving nutrition, increasing physical activity and reducing stress.

PSC's Program for Emotional Problems in Children (PEP-C), under the direction of Dr. Tawfik, continued to have another successful year serving children in our community. Supervised by Dr. Tawfik, PEP-C's Graduate Assistants, **Sarah Kennedy** and **Jamie Mash**, conducted school-based group treatment programs for Miami-Dade County Public School (MDCPS) students. Preventive community mental health to ethnically diverse children and their families continued to be our focus. MDCPS students were successfully taught evidence-based strategies on how to cope and manage stressful events. Bilingual educational workshops for parents continued to be popular.

Pre-post intervention results continue to show a significant decrease in symptoms of anxiety and depression among PEP-C group participants. Teachers, counselors, and school staff have also benefitted from PEP-C through workshops which have helped them to identify and better manage varying emotional and behavioral disorders in their classrooms. Results of this comprehensive school-based anxiety prevention program, utilizing modified Cognitive Behavior Therapy (CBT) for Hispanic youth, will be presented at the upcoming Annual Convention of the American Psychological Association (APA) in August 2015.

Integrating research into clinical practice is imperative at the PSC. Many faculty members, including **Drs. Amanda Jensen-Doss, Gail Ironson, Kristin Lindahl, Amy Weisman de Mamani, and Jennifer Durocher** continue to provide supervision to our students and assist in clinical training and research. Many specialty research clinics, run by faculty members who are also PSC clinic supervisors, also continue to provide services to our community. **Dr. Jill Ehrenreich May's** Child and Adolescent Mood and Anxiety Treatment (CAMAT) program has been successful in providing state-of-the-art clinical services to children and adolescents with mood and anxiety disorders. **Dr. Kiara Timpano's** Program for Anxiety, Stress & OCD (PASO) lab is involved in training students on hoarding, OCD, and social anxiety disorder. They also are actively investigating distress tolerance and anxiety sensitivity. **Dr. Amy Weisman de Mamani's** Schizophrenia Family Lab continued to conduct bilingual (English and Spanish) treatment interventions for schizophrenia, which aims to help both patients and family members cope more effectively with the illness. In addition, the Trauma Treatment Program, under the supervision of **Drs. Gail Ironson** and **Blanche Freund**, provides valuable clinical services and training for individuals who have experienced traumatic events in their lives. For more information go to www.psy.miami.edu/psc/



The FDLRS-University of Miami/Linda Ray Intervention Center has been busy providing summer early literacy activities, classroom behavioral support activities and curriculum strategies to over forty infants and toddlers with developmental delays, through funding from the Children's Trust and the Department of Education, Bureau of Exceptional Education and Student Services (BEES). Additionally, infant mental health services are being provided to babies and toddlers identified as victims of child maltreatment with their parents as part of an ongoing collaboration with the Juvenile Court. Community outreach training has also been provided to a variety of educational and social service agencies across the state, covering topics such as disability awareness and typical and atypical child development. UM staff currently provides technical assistance for a CDC-funded feasibility study of the Legacy for Children parenting program. For more information go to www.fdlrs-um.org.



Dr. Christine Delgado, Director of the Children's Registry and Information System (CHRIS) reports that the project has been continuously funded by the Florida Department of Education since 1991. CHRIS staff, including **Olga Camacho, Cory Beermann, and Tony Gonzalez** are responsible for the development and maintenance of a statewide registry of young children who have disabilities that may affect their future school performance and children who may be at-risk of developing such disabilities. Additional information on the CHRIS project can be obtained by visiting us online at www.chris.miami.edu.



UM PSYCHOLOGY ALUMNI NEWS & NOTES

We are always happy to hear what our alumni are up to. If you would like to share your current pursuits with us and your fellow alumni, please send a note to alumninews@psy.miami.edu and we will be glad to include it in our annual newsletter.

Margo Barton, B.A., '06, is completing her Master's degree in Counseling Psychology at Avila University in Kansas City, MO. She is currently an intern at KVC, a children's welfare agency, where she is providing individual therapy to children and parents, as well as learning how to administer psychological assessments.

Hallie Bregman, Ph.D. '13, has joined Understory Weather in Boston as a Data Scientist.

Constanza Covarrubias '10, earned her Master of Public Health degree in Management and Policy from the University of Florida but she is always a 'Cane first and began working as a management consultant at Accenture in New York during the summer of 2015.

Daniel M. Doleys, Ph.D., '75, Director of the Pain and Rehabilitation Institute in Birmingham, Al since 1979, has recently published *'Pain: Dynamics and Complexities'* (Oxford University Press, 2014) and a more patient/public oriented book *'Understanding and Managing Chronic Pain: A Guide for Patients and Clinicians'* (Outskirts Press, 2014).

Susana J. Ferradas, B.A. '97, M.S.Ed. '99, is currently working on a Ph.D. in Counseling Psychology at Howard University in Washington, D.C. During the 2015-2016 academic year she will be completing an APA-Accredited Psychology Internship at The University of Memphis Counseling Center.

Marisa Gianino (Agapito) A.B. '98, was awarded the 2015 North America Chairman's Award for Exceptional Volunteerism, which is considered the pinnacle of volunteer achievement at State Street.

Phalande Jean B.S. '15, a Master's candidate in Marital and Family Therapy at Syracuse University, has been granted a Graduate Assistantship at the Family and Couple Therapy Center for the 2015-2016 academic year. Ms. Jean serves as a liaison for clients, clinical

supervisors and practicing therapist to ensure mutually convenient and effective counseling sessions.

Gilly Kahn (formerly Bortman) '12, graduated with her M.A. in Experimental Psychology from Florida Atlantic University in June 2014. She is now a second-year Clinical Psychology Ph.D. student at Nova Southeastern University. Gilly reports that she published an article on associations between adolescents' problem-focused talk ('co-rumination') and anxiety in the scholarly journal, *Developmental Psychology* (2015). On a personal note, she married Jeremy L. Kahn (UM School of Law '13), her high school sweetheart in July 2014. Her maid of honor was her best friend from the U, Margalit Goldgof, also class of 2012.

Aixa Marchand B.A., '09, is a doctoral student in Education and Psychology at the University of Michigan and has been granted the National Science Foundation Graduate Fellowship.

James S. Richardson, '65, reports that he has filed a patent application for a life saving invention to be used in marine rescue operations. Additionally, he is listed in Marquis' Who's Who in America, 70th Platinum Anniversary Edition (2015).

Cleo A. Samuel, B.S. '07, received her Ph.D. in Health Policy from Harvard University in May 2014. She is now an Assistant Professor of Health Policy and Management at the University of North Carolina at Chapel Hill. She was recently awarded NIH funding to examine racial disparities in symptom management and quality of life among breast cancer patients.

Stephen Sideroff, Ph.D., '71 is pleased to announce the publication of his new book: *"The Path: Mastering the Nine Pillars of Resilience and Success"* based on his new model of living optimally. His book is available at Amazon.com. Dr. Sideroff is Assistant Professor in the Department of Psychiatry at UCLA's school of

medicine and in private practice in Santa Monica, California.

Jamie Lewis Smith (M.S. '04, Ph.D. '07) continues to live in Jacksonville, FL and work as the Organization Development Manager for the Nemours Children's Healthcare System. She and her husband, Curtis, were excited to welcome their first child, Beckett Van Smith in July.

Julia Stiffman, '15, is beginning her Masters of Social Work (MSW) studies at the University of Pennsylvania School of Social Policy and Practice this fall. For her field work she will be interning at Gift of Life Family House and Donor Program, a facility that provides housing, counseling, and other resources to families with a loved one awaiting an organ transplant at any of the hospitals in the Philadelphia area.

Patricia Wick, Ph.D., '90, has been the Assistant Director and Training Director at the Counseling Center at the University of Maryland, Baltimore County (UMBC) since 2009. The doctoral internship program, which started with two part-time interns in 2009, was approved for APA accreditation in 2014. Currently, we have three full-time interns, three psychology externs, and one social work intern. In addition to working full-time at the Counseling Center, I also have a small private practice in the Baltimore suburbs. On a personal note, I have two kids in college and one who is a senior in high school. Where does the time go?!?! We are long overdue for a reunion!

Jennifer Zink, B.A. '13 began her Ph.D. in Health Behavior Research at the University of Southern California Keck School of Medicine after working on a Centers for Disease Control grant in Miami-Dade County Public Schools for 15 months. The goal of this grant was to increase childhood physical activity throughout the school day, and she plans to continue to study childhood obesity at USC.

DONOR HONOR ROLL

THANK U

to all our generous donors for supporting the research, programs, and services of the Department of Psychology. We are so grateful to you for investing in our vision for building and maintaining a world-class Psychology Department.

INDIVIDUAL/FAMILY

\$100,000+

Leonard Silverman, M.D. and
Gail Silverman, Ph.D.

\$50,000+

Charles Bahry
Pat Cocchi
Robert and Jean Schomber
Mary Tanguay

\$10,000+

Rene and Lizbeth Arencibia
Rafael and Michelle Cruz
Patricia M. Menendez Cambo,
Esq.
Sanjiv Sharma

\$5000+

Michael Alessandri, Ph.D.
Andrea Travaglia and the
ASK Foundation
Eduardo and Yolanda Atienza
Ernest and Ani Bachrach
Stephen and Ilise Binhak
Steven Eardley
Marlene Glenn
Jennifer Mercado
Frank M. Nelkin
Francisco and Maria Palacio
Anita Setnor Byer and Ralph
M. Byer
John C. Sumberg, Esq.
Roberto Tuchman, M.D. and
Laurie Tuchman
Thomas and Marie Ilene
Whitehurst

\$2500+

Chirine Atoui and Ziyad
Mneimneh
Carmen Bou and Jesus Cuza
Dennis and Allison Brady
Charles S. Carver, Ph.D. and
Youngmee Kim, Ph.D.
Jennifer Durocher Ph.D. and
Mark Durocher
Sandy Glass

Shulamit Oletzky
Richard Rozencwaig, M.D. and
Jodie Rozencwaig
Blake and Jennifer Sando
Howard and Sharon Srebnick
Russ Wilson
Louis and Nancy Zaretsky
Joseph Zumpano, Esq.

\$1000+

Maria d. Ariza
Shoshannah Ascione
Jaime A. Bianchi, Esq.
Justin Canha
Tricia Diane Cassel, Ph.D.
Mark and Shari Coe
Jill E. Conner
John and Donna D' Eri
Helen Bramlett, Ph.D. and W.
Dalton Dietrich, Ph.D.
Deborah Domenech
George Feldenkreis
Isabel C. Garcia
The Honorable Rene Garcia
Gabriela Gomez Riveron
Elyse K. Hurtado, Ph.D.
Yosbella A. Ibarra
Julie A. Jacobs
Carol Kingsley
Andrew Labbie, M.D. and
Rhonda Labbie
Annette M. LaGreca, Ph.D.
Rafael and Ruby MacNamara
Paul Mantell, M.D. and Ann
Mantell
Regina McDonald
Roger and Alessia McIntosh
Michael and Cynthia Moran
Dr. Meaghan V. Parlade
Glenda G. Pedroso
John M. Pereira
Joseph Piroso
Marlene R. Post Feinstein
Leonard and Elaine Roberts
Juan C. Rodriguez
Tony Rodriguez
Edison Scroback
David and Wendy Smith
Maria H. Srebnick

Luz M. Valle
Adam Weizer
Richard A. Williams, Ph.D.
Seth and Lori Wise

CORPORATE/ FOUNDATION

\$100,000+

American Cancer Society, Inc. -
Florida Division
Buffett Early Childhood Fund
Cystic Fibrosis Foundation
Florida Breast Cancer
Foundation
John Templeton Foundation
Massachusetts General Hospital
The Children's Trust

\$50,000+

Miami Museum of Science
Our Kids of Miami-Dade/
Monroe, Inc.

\$25,000+

European Union
The Daniel Jordan Fiddle
Foundation
The Lowell S. Dunn & Betty L.
Dunn Family Foundation Inc.
Overland Carriers Incorporated

\$10,000+

Community Foundation for
Palm Beach and Martin
Counties
Greenberg Traurig Foundation
Hershey Family Foundation
Hogan Lovells US, LLP
The 1440 Foundation
The Dan Marino Foundation,
Inc.
Twin Plum Foundation for
Autistic Cure, Inc.
Walker Family Foundation.

\$5000+

Bilzin Sumberg Baena Price &
Axelrod, LLP

We Mind Institute PA

\$2500+

Behavior Analysis, Inc.
Butterfly Effects
Convey Health Solutions
Jewish Communal Fund
MasTec, Inc.
Palmer Trinity Private School,
Inc.
Paso Alto Corporation
Paul J. DiMare Foundation
The Bloom Foundation
Trivest Partners, L.P.
Wells Fargo Advisors, LLC
Zumpano Patricios & Winker, P.A.

\$1000+

Accord Productions
Autism Society of Florida, Inc
Autism Speaks, Inc.
BDO USA, LLP
Beth David Congregation/Cantor
Discretionary Fund
Cadenza Center for
Psychotherapy of the Arts
Cedrus, Inc. DBA American
Stairs
Coral Gables Bar Association,
Inc.
Crystal Academy Coral Gables,
LLC
Epic Hotel
Le Petit Papillon Montessori
School
Marc Ryan Anderson-Ferraro
Foundation Inc.
Organization for Autism Research
Pediatric Psychology Associates
PRP Wine International
Publix Super Markets Charities,
Inc.
Reliance Wholesale
Rustica Franchise Company, Inc.
St. James Smokehouse
Stratton & Feinstein, P.A.
The De Moya Foundation
Univision Farmacia
Wiseheart Foundation, Inc.

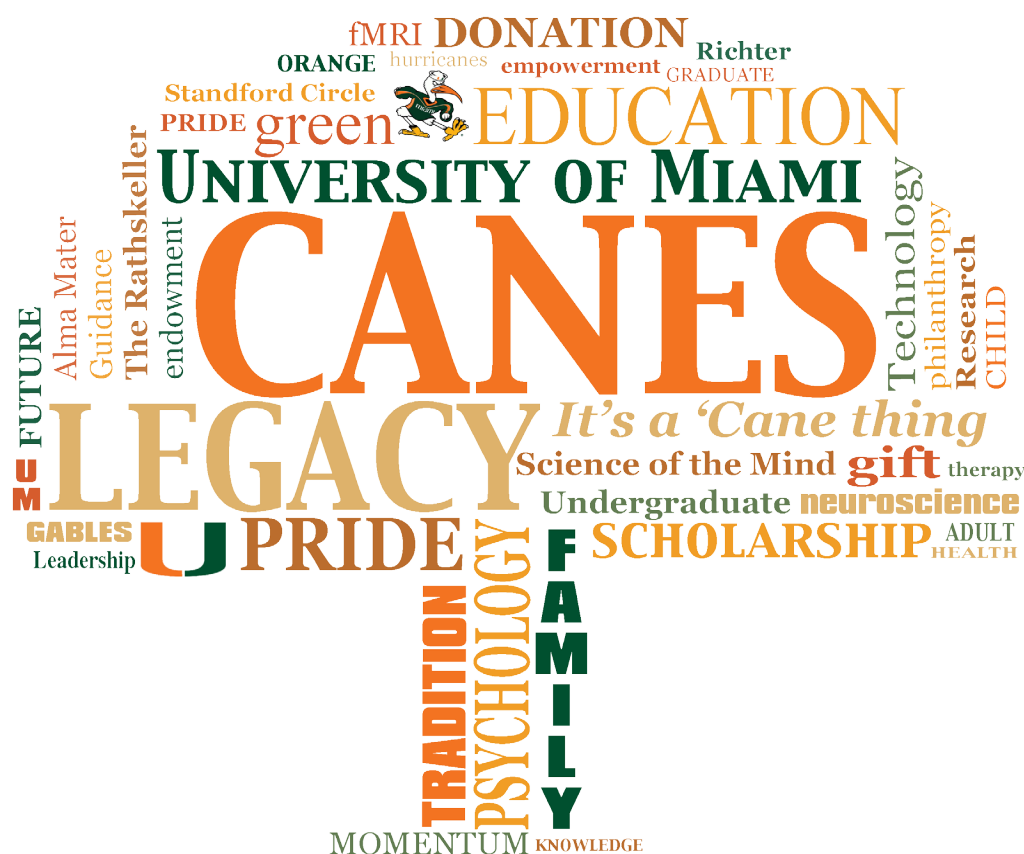
Contribute today by visiting www.psy.miami.edu/givetopsychology

This donor list represents donations of \$1000 or more to the Department of Psychology, the Undergraduate Neuroscience Program, and our community service programs, including CARD and the LRIC. We make every effort to assure accuracy in this reporting, but errors and omissions may occur. If your name is listed incorrectly or does not appear on this list, please accept our apologies, but also please do let us know.

What will your legacy be?

Whatever drives you, whatever inspires you - you can make a difference by supporting the Department of Psychology.

By naming the department as a beneficiary in your will or trust, you can provide funding for:
Scholarships for outstanding students, Ground-breaking faculty research, and Innovative new programs.



A bequest in your will or trust allows you to fulfill your philanthropic goals while minimizing your taxable estate and simplifying the probate process. You also retain full use and control of your assets during your life.

LEAVE A LEGACY AND IMPACT GENERATIONS TO COME!

To learn ways you can make a bequest or for sample bequest language,
please visit www.miami.edu/plannedgiving

or contact: **Cynthia L. Beamish**, Executive Director, Office of Estate and Gift Planning
(305) 284-4342, cbeamish@miami.edu

UNIVERSITY
OF MIAMI
DEPARTMENT of PSYCHOLOGY



Department of Psychology
P.O. Box 248185
Coral Gables, FL 33124-2070

NON-PROFIT ORG
US POSTAGE
PAID
MIAMI FL
PERMIT # 438

Please forward
Address correction requested
Return postage guaranteed



Keep Psychology's MOMENTUM GOING... CONTRIBUTE TODAY BY VISITING WWW.PSY.MIAMI.EDU/GIVETOPSYCHOLOGY

*For information about making a gift to the Department of Psychology,
please contact Dr. Michael Alessandri, at malessandri@miami.edu or
(305) 284-6558.*

EMAIL: alumninews@psy.miami.edu
MAIN PHONE NUMBER: (305) 284-2814
WEBSITE: www.psy.miami.edu
FAX: (305) 284-3402



*Thank you to all those faculty, staff, and students
who contributed to this edition of Psychology News.*

MICHAEL ALESSANDRI, PH.D.
EDITOR

VIVIAN M. PEREZ
LAYOUT AND DESIGN

Published by University of Miami College of Arts and Science, Department of Psychology