

# Psychology News

Undergraduate Edition for Psychology and Neuroscience Majors

January 2004

Vol. 5 No. 3

College of Arts and Sciences



## Community Lecture Series: Psychology in Film 2004

The Department of Psychology will host another Community Lecture Series: **Psychology in Film**, featuring three films that depict various aspects of psychopathology. Three members of our faculty will host the films, and discuss the way in which the films portray various psychological disorders and conditions. They will then discuss their own research and experiences with these disorders, comparing and contrasting what is portrayed in the films. They will also highlight some recent research which may help us to understand, treat, and cope with these conditions. The Film Series will be held in the **Randal C. Johnson Lecture Hall, on the fifth floor of the Fred C. and Helen Donn Flipse Building**, beginning at 6 p.m. Refreshments will be served at intermission. Discussion will be held at the conclusion of the film. The Film Series is free of charge.

### On Friday, February 6th



Drs. Keith Scott, Lynne Katz, and Daniel Messinger, faculty from our Child Division and the Linda Ray Intervention Center, will present the film *Losing Isaiah*.

Academy Award winners Halle Berry and Jessica Lange star in this heart-wrenching film about drug addiction and child custody.

### On Friday, March 5th



Dr. Amy Weisman, from our Adult Division, will discuss *A Beautiful Mind*. Academy award winners Russell Crowe and Jennifer Connelly star in the

true story of John Nash Jr., mathematician, father of Game Theory, and winner of the Nobel Prize. The film portrays the Nash family's struggle with schizophrenia.

### On Friday, April 2th



Dr. Kim Fuller, the Director of the Psychological Services Center at UM, will discuss the critically acclaimed film *The Hours*.

Award winning actors Nicole Kidman, Meryl Streep, and Julianne Moore, co-star in a story that compares the struggles of three depressed women in different generations.

## Congratulations Honor Roll Students!

### February 19 is time for your 'Just Desserts'

On Thursday February 19, between between 1:00 and 3:00 the Department of Psychology will celebrate the accomplishments of all students who made the Honor Roll. Spring and Fall 2003 were great semesters for Psychology and Neuroscience majors, over 39% made the Honor Roll! Of the new freshman 5.5% made the Honor Roll. 45 of you were named to the President's Honor Roll with a 3.9 GPA or higher, 110 made the Provost's Honor Roll with a 3.7 GPA or higher, and 88 made the Dean's List with a 3.5 GPA or higher.

In recognition of these achievements, the Department of Psychology will hold the third annual "Just Desserts" celebration. All Psychology and Neuroscience majors who made the Honor Roll in either the Spring of 2003 or the Fall of 2003 are invited to attend. Everyone who is invited can bring a friend or family member to share in the fun and festivities! As usual, in addition to lots of desserts, there will be games to play and prizes to win. For those of you who are worried about sugar, there will be fruit, cheese, and sugar free treats, as well. Faculty and administrators will be on hand to give congratulations, cheer you on in the games, and compete for the food!

# Mark Your Calendar!



Last day to add a class - Wednesday, January 28.

Last day to drop without a "W"- Wednesday, February 4.

Thinking of dropping a class? Planning and prompt action can avoid an unnecessary "W" on your record. Although having a "W" or two is not a 'bad' thing, a string of them could be a red flag and an indicator of irresponsibility and ill-preparedness.

Instructors will be turning in **Academic Alerts on Monday, March 1**. You should have feedback on some type of graded work by that time. Remember, you may not drop a class at all after **Wednesday March 27**.

Last day to apply for May graduation - Friday, February 13.

Graduation is not automatic! You must apply for graduation through the EASY system. Students who plan to "walk in May," but finish their course work in the summer must apply for Summer Graduation by February 27. Also, if you are planning to graduate, make an appointment for a **senior credit check** with Marian Dahman in Ashe 200 (x4333).

Confused about your curriculum or your future path? Stop by UASP and talk to an Advisor or Peer Advisor. Remember, during advising for registration (in March) you will need an appointment to see us. Come now! Beat the rush!



## Find yourself!

1. Read *Psychology News*
2. See if your name is mentioned
3. Bring the newsletter to UASP and receive a free gift!

## Now Hiring

### Peer Advisors for Fall 2004

Undergraduate Academic Services for Psychology  
will be holding

Informational Meetings for Prospective Psychology Peer Advisors

on Monday, February 16, at 10:30 a.m.  
and Tuesday, February 17, at 3:00 p.m. in Flipse 508

UASP is looking for enthusiastic, friendly, motivated, conscientious, and talented Psychology and Neuroscience majors to become part of the next cohort of Psychology Peer Advisors. If you are a team player, passionate about psychology/neuroscience and advising, like to help others, and would like to become more involved with the Department, then come to our meeting to learn more.

Described by some as "the best job on campus," Psychology Peer Advisors help run all of the activities in the Undergraduate Academic Services for Psychology. This includes helping to prepare Psychology and Neuroscience students for their advising appointments. As direct liaisons between the staff at UASP and the undergraduate population, Peer Advisor ideas and feedback influence the changes we make in the undergraduate program. They are the muscle behind the Undergraduate Conference, the Community Lecture Series, and "Just Desserts," and the talent behind *Psychology News* and other undergraduate publications. This is a real job, paying \$6.50 per hour for the first year and \$7.50 thereafter. Psychology Peer Advisors gain office experience, get a chance to hone their people and service skills, learn some of the nuts and bolts of events planning and implementation, and get experience working as a member of a team.

Peer Advisors should have at least a 3.0 cumulative GPA, six credits in Psychology and be able to work at least 5 hours a week, starting the week before the semester begins in Fall 2004. For more information call José Rodríguez at x3303, [JoseR@miami.edu](mailto:JoseR@miami.edu) or Dr. Noriega at x1756, [vnoriega@miami.edu](mailto:vnoriega@miami.edu).

# Undergraduate Conference for Research in Psychology

On Sunday, November 16, students and faculty gathered for the Fourth Undergraduate Conference for Research in Psychology (UCON). This year UCON was held on the 5th floor of the new Flipse Building. The new facilities provided state-of-the-art audio visual equipment for oral presentations. Poster presentations were set-up all along the edges of the Student Lobby and hall. Twenty-seven undergraduate Psychology and Neuroscience majors from UM and FIU presented their research from this summer's PRIME program. Six students gave oral presentations. Three students spoke in the Randall C. Johnson Lecture Hall and three spoke in the Computer Lab. Research projects reflected the diverse areas of Psychology.

Over 150 people from UM, FIU, and PRIME partner school, Miami-Dade College, attended the event. In addition, many students brought their parents, partners, and friends to see their hard work. Food, as always, was provided by Psychology's own Dr. No, with the help of José Rodríguez and their team of 14 peer advisors. Miami-Dade College's Psychology Club also helped out with set-up and clean-up.

Cash prizes were awarded for both poster and oral presentations. The best poster presentation award went to Melissa Bent of UM and Yolanda Piña of FIU. The best oral presentation award went to Theresa Dulski of UM and Andre Viana of FIU. The judges agreed that all the students produced excellent work and that they all deserved recognition for their efforts.

Not able to make it to UCON? Want to know more about research at UM? See below.



## 8th Annual Research and Creativity Forum (RCF)

Thursday, April 15, 11:00 a.m. - 2:00 p.m.

University Center



RCF is an annual University-wide conference showcasing both graduate and undergraduate research from a number of different disciplines. Poster presentations will be on display in the UC on the 1st and 2nd floors. This is the major event sponsored by INQUIRY, our undergraduate research organization, in conjunction with the Graduate Student Association and the Graduate School.

## FORUM in its 6th year!

Some of the students who have been involved in these research projects described above got to know their research mentor when they enrolled, as Freshmen, in our unique orientation, advising, and mentoring program, FACT FORUM. Last semester we conducted 5 Psychology and 3 Neuroscience FACT sections. These sections give incoming students a heads-up about opportunities at the University and in the Department, help students take charge of their own curriculum planning, and make the most of their undergraduate education. There are 10 FORUM sections this semester (7 Psychology and 3 Neuroscience). Faculty members who do research lead the FORUM sections, which are held once a week for an hour. In the sections, students do short readings and write short papers critiquing various research projects in the field. Some of the articles are of historical interest and some cover cutting edge research. The goal is to familiarize students with research in general, in the field, and specifically, what opportunities there are for research here on campus or at the Medical School.

# Summer Research at UM: PRIME 2004

Psychology Research Initiative Mentorship Experience (PRIME) is a ten-week summer research program, now in its seventh year. As you may know, students in PRIME work for twenty hours a week in a Psychology research laboratory under the direction of a faculty member. Students attend a weekly seminar to discuss their research projects, issues regarding research ethics and protocol, guidelines for poster preparation, and plans for graduate school, among other topics. All PRIME students prepare a poster presentation to showcase their work. At the end of the program students display their posters for parents, friends, faculty, and other PRIME students. In the Fall, students present their work formally at the UCON (see page 3). In the Spring, they again present their work at the University's Research and Creativity Day.

Students can participate in the PRIME program on one of three levels. Full PRIME students have successfully completed both PSY 204 (Statistics) and PSY316 (Experimental Psychology), and have above a 2.75 GPA. Full PRIME students receive a \$1,500 summer stipend as well as \$500 book stipend for the Fall to be used toward books, school supplies, grad school admission fees, and GRE prep-course fees. JUMP START (Just for UM Psychology Students To Accelerate Research Training) is for students who have not completed PSY 316 and have above a 2.75 GPA. JUMP START students receive a \$1,000 summer stipend as well as \$250 book stipend for the Fall. PRIME Associate students are funded through another source (i.e., Dean's Women and Minority Scholarship), work with Psychology faculty, participate in the weekly meetings, and present a poster.

PRIME is part of a nationwide effort to increase minority participation in the psycho-biomedical sciences. The project is mainly funded by the National Institute for General Medical Sciences (NIGMS) and administered through the American Psychological Association (APA). If you are of African-American, Hispanic, American Indian (Native American), or Pacific Islander descent and are interested in biomedical psychology, PRIME may be for you. If you are not interested in biomedical psychology, or not of minority descent, you can apply for PRIME II. PRIME II is the same as PRIME, save for the funding source. Four years ago, the Provost of the University and the Dean of the College of Arts and Sciences provided matching funds for students interested in research in psychology. Students who apply for PRIME II can participate on the same levels as mentioned above.

PRIME 2003 will begin on Wednesday, May 26 and end Thursday, July 22. If you are interested in participating, stop by the **UASP office in Flipse 508 after February 11 to pick up an APPLICATION.** A completed application includes, a completed application form, a one-page statement of purpose, a letter of "intent to supervise" from a potential mentor, a letter of recommendation, a recent copy of your ACE (Academic Curriculum Evaluation), and a brief autobiographical summary. Incomplete applications will not be accepted. If you plan on taking classes or working over the summer while participating in PRIME, it is your responsibility to make accommodations for the weekly seminar and research hours with your mentor. **Application deadline is March 29.** Notification of acceptance to the program will be made by April 15. For more information call José at (305) 284-3303, email: [JoseR@miami.edu](mailto:JoseR@miami.edu)

## Other Summer Research Opportunities

### APA Summer Science Institute



This year's APA Summer Science Institute will be held at Vanderbilt University in Nashville, Tennessee from June 19-27. Freshmen and Sophomores with a strong academic background and interest in research are encouraged to apply. This is an intensive, all expenses paid program that immerses students in the science of psychology. **Applications are due early (February 9).** Visit the website at [www.apa.org/science/ssi.html](http://www.apa.org/science/ssi.html) for more info.

### Summer Medical Education Program



The American Association of Medical Colleges (AAMC) is now accepting applications to its prestigious Summer Medical Education Program. Students spend six weeks, all expenses paid, in an intensive medical school preparation program at one of eleven sites across the nation. Students from economically disadvantaged backgrounds, underrepresented ethnic/racial minorities in medicine, underrepresented rural residents in medicine, and those with a "strong commitment to diversity in the workforce" are encouraged to apply. Visit the website at [www.aamc.org/students/considering/smep/start.html](http://www.aamc.org/students/considering/smep/start.html) for more info.

### Summer Research Institute in Experimental Psychology

The National Science Foundation and the University of South Carolina, Columbia, offer an intensive eight-week summer research program for students interested in Experimental Psychology. Students spend 35 hours per week in a research lab heavily immersed in the project, attend a class seminar on research methods and data analysis, and attend weekly colloquia of faculty from USC. Labs are divided into three main areas, Behavioral Neuroscience, Cognition, and Cognitive Neuroscience. Specific projects include studies in infant cognition, perception and attention, basic neuroscience, psychopharmacology, and cognitive neuropsychology, among others. The program offers a \$2,400 stipend. **Deadline for application is March 5.** For more info check the website, [www.cla.sc.edu/psyc/psycugrad/srifelds.html](http://www.cla.sc.edu/psyc/psycugrad/srifelds.html)



**There are several important dates on this page Mark your calendar!**

# What's So Important About Research?

If you have had any advising from the staff in UASP, you know that we consider research a big part of any psychology curriculum. Still, however, you may ask yourself, "Should I get involved in research?" The answer is as personal as your own curriculum choices, but here are some points to consider when making your decision. 1.) Most graduate school programs in psychology will have research experience as a prerequisite to admission. Many graduate programs in the other social sciences will also consider psychology research to be good experience for prospective students. 2.) As citizens in today's world, we are all bombarded with findings based on research. Becoming involved in research (of any kind) can help you to sort out the results of the research you hear about every day. 3.) Working in a research laboratory with a mentor and a research team is great experience for any type of career. Relationships you develop in situations such as these can help you get good letters of recommendation, learn more about team work, and help you get to know yourself and your own work style.

Knowing the options for research will help you decide if there is a project in an area that would be right for you. Here at UM there are many research opportunities in the Psychology Department. Last year, about 50 % of all graduating Psychology and Neuroscience

## Current Research Projects in Psychology

### Adult Division

|                                      |   |
|--------------------------------------|---|
| Dr. Charles Carver                   | Long-term Cancer Survivors: Quality of Life<br>Breast Cancer Coping & Recovery Project                                  |
| Dr. Adele Hayes<br>Dr. Sheri Johnson | Depression Treatment and Research Program<br>Bipolar Disorder Studies<br>Emotional Support<br>Positive Affect and Mania |
| Dr. Jean-Philippe Laurenceau         | Validating Measures of Relationship Functioning<br>with Spanish-speaking Couples  |

### Child Division

|  |  |
|--|--|
| Dr. Lynne Katz   | Linda Ray Intervention Project<br>Analyses of Environmental Risk Factors for Children<br>Prenatally Exposed to Cocaine   |
| Dr. Marie Cheour<br>Dr. Christine Delgado<br>Dr. Alan Delamater<br>Dr. Daryl Greenfield<br>Dr. Adele Hayes | Bilingual Phonemic Processing and Brain Development<br>CHRIS Project: Preschoolers with Disabilities<br>Quality of Life in Youth with Type 1 Diabetes<br>Head Start and School Readiness<br>Depression Risk Factors and Predictors of Well-Being<br>Dysphoria, Past Depression, and Social<br>Information Processing |
| Dr. Annette LaGreca<br>Dr. Kristen Lindahl   | Disclosure of School-age Children Infected with HIV<br>Family Communication Study  |
| Dr. Daniel Messinger   | Center for Treatment Research on Adolescent Drug Abuse<br>The Social Play Interaction of Prenatally Cocaine Exposed<br>Children and Their Caregivers<br>Maternal Lifestyle Study   |
| Dr. Peter Mundy  | Emotional Judgments<br>Early Social & Communication Development Project<br>Social Development in Asperger's Syndrome<br>Early Intervention with Children with Autism   |
| Dr. Keith Scott  | EEG Studies of Infants and Children<br>Miami Families Project  |

### Health Division

|  |   |
|--|---|
| Dr. Mike Antoni  | Center for Psycho-Oncology Research "C-Smart"<br>Found Meaning in Individuals with Cancer   |
| Dr. Ron Durán  | CBSM Intervention in Gay Men and Women with HIV/AIDS<br>Latino Stress Management, Adherence & Relaxation<br>Training  |
| Dr. Marc Gellman<br>Dr. Barry Hurwitz                    | The GREAT Heart Study<br>Cardiovascular Risk Factors in Disease Progression<br>Drug Abuse, HIV, and Coronary Vascular Disease<br>RBC Mass, ANS Integrity, & Syncope Susceptibility in CFS<br>Psychoimmunology of HIV/AIDS |
| Dr. Gail Ironson<br>Dr. Maria Llabre<br>Dr. Frank Penedo | Questionnaire Scoring in Health Research<br>Cognitive Behavioral Stress Management (CBSM)<br>CBSM in Men with Prostate Cancer<br>CBSM in HIV Positive Drug Users<br>CBSM for Hispanic Men with Prostate Cancer            |
| Dr. Patrice Saab   | Project ACE (Adolescent Cardiovascular Evaluation) Blood<br>Pressure Study  |
| Dr. Ray Winters  | Relation Between Sleep Deprivation and Mood   |

majors had experience in research. for credit, i.e., had credit for 367 or 368. However, you don't need to take a class. You can become involved with research on many levels as a volunteer or, sometimes, even as a paid work study or student employee.

The key to a good experience in research is involvement. Be sure to pick a project that interests you and in which you will have a chance to really participate. At the left is a brief listing of mentors seeking research assistants. For a detailed job description go to UASP in Flipse 508 and check out the PSY 367/8 book. Or, go to [www.psy.miami.edu/undergraduate](http://www.psy.miami.edu/undergraduate). Click on the Undergraduate Research Opportunities link. Still confused or want more guidance? Check our Dr. Noriega's Introduction to Research and Careers in Psychology, PSY 365.

Getting involved with research is a great way to round off your education and receive practical training and experience. The University of Miami, is a research-designated university, If you are not interested in doing Psychology research, check out opportunities in one of the other departments or at the Medical School.

# Congratulations Psychology December Grads!

## College of Arts and Sciences

|                   |                       |
|-------------------|-----------------------|
| Irene Alicot      | Lina Paredes          |
| Lisette Alino     | Aarti Patel           |
| Lila Asfour       | Erica Paultre-Nicolas |
| Elizabeth Baldwin | Dax Pedraza           |
| David Coronado    | Monica Perez          |
| Darlene Davila    | Meghan Perkins        |
| Jeanette Diaz     | Susan Pineda          |
| Keith Foster      | Saimary Rivero        |
| Ismary Gondar     | Brooks Rowlett        |
| Kristen Hoffacker | Christian Ruiz        |
| Silvia Infante    | Chinyere Tunsill      |
| Kristen Klufas    | Alejandra Urbaez      |
| Vanessa Lehner    | Cristina Valdes       |
| Melissa Magyar    | Darian Williams       |
| Emile Milgrim     | Jordan Wilson         |
| Rossana Navarro   |                       |

## School of Education

Cetonya Cacho  
Jennifer Greco  
Karoli Melwani  
Katalina Montoya  
Sory Sanchez  
Wendy Simmons

## School of Communication

David Flick  
Jeff Gelles  
Danielle Janke  
Nadine Lada  
Sandra McMillian  
Natalia Perez  
Shane Plageman  
Alyson Weiss

## Hats Off to...

**Vanessa Lehner** who will be presenting a poster at this year's meeting of the American Psychological Society FL. Vanessa participated in PRIME this past summer at the JUMP START level. Her mentor is Dr. Frank Penedo. Her poster for APS is titled, "Perceived stress management skill mediates the relationship between negative mood and overall sleep quality after prostate cancer treatment." This will be Vanessa's first national conference. She and Dr. Penedo will be traveling to Orlando to deliver the poster.

**Amy Outz** who will be getting married this summer. Amy is a Peer Advisor in the UASP office and Vice-President of Psi Chi. She plans to apply to graduate programs in forensic and clinical psychology. Congratulations on your engagement Amy!

**Jose Rodriguez**, Psychology Advisor who recently finished his master's degree from the School of Education. For the past two and a half years Jose has been working full-time for the Department while taking classes in Higher Education and Enrollment Management at night. This semester he will be promoted to Director of Advising for Psychology and will be in charge of the Research Participation Office. Jose plans to 'stick around Miami' for a bit longer; he hopes to collaborate on research with Drs. Noriega and Duran, teach for the Communication Studies Program, and enjoy more of what Miami has to offer! He will, however, be applying to graduate programs to earn a Ph.D. in the future.

## Majors Fair 2004

Wed, Feb. 11, 2004

UC Lower Lounge 11-2 p.m.

For those of you who are considering changing out of Psychology or Neuroscience, or for those still unsure about which minor might be best, the Majors Fair is a great place to gather lots of information at one time. Faculty, staff, and students from the College of Arts and Sciences, Schools of Business, Communication, Education, and Nursing will be available to answer questions and share information with interested students. Pre-law, pre-med, and pre-MBA will also have representatives available. For more information about the Majors Fair, contact Ali Rodriguez at the Toppel Career Planning and Placement Center, (305) 284-1819.

## Phi Beta Kappa Speaker

Paul R. McHugh, M.D.

We hope that you will join us for a talk by Distinguished Service Professor of Psychiatry and former Chair of Psychiatry and Behavioral Sciences at Johns Hopkins. His research has focused on brain and behavior, with particular emphasis on neuropsychology, eating disorders, drug abuse, and psychiatric epidemiology. He is a member of the President's Council on Bioethics and the Catholic Church's review board for sexual abuse. Dr. McHugh plans to discuss his experience with the false memory syndrome and the concept of repressed memory of childhood sex abuse. Join us for his talk titled

## "Memory Wars"

on Thursday, Feb. 12, 8:00 p.m.

Fred C. and Helen Donn Flipse Building,  
Johnson Lecture Hall, Room 536



Congratulations  
Canes!  
2004  
Orange Bowl  
Winners!

# The Psi Chi Connection

News & Briefs for University of Miami Psi Chi

Vol. 5 Num. 3

## NEW MEMBER APPLICATIONS

Applications for membership to Psi Chi will be sent out to qualified students in March. New members will be welcomed to the organization during the induction ceremony and banquet held in May. We hope to see all new (and old) Psi Chi members there!

## QUALIFICATIONS FOR ACTIVE STUDENT MEMBERSHIP

Psi Chi is a National Honor Society. The national office stipulates that members must meet the following criteria for membership:

1. Completion of at least 3 semesters.
2. Completion of 9 credits in Psychology.
3. Declaration of Psychology, or Neuroscience major or minor.
4. Rank in top 35% of class.

Note: Occasionally, eligible individuals do not receive an invitation to join Psi Chi. If you are one of those who has fallen through the cracks, don't hesitate to give us a call.

*Remember: you do not have to be a member of Psi Chi to attend our meetings and events! We look forward to having you join us.*

Questions? Email us!  
[PsiChimiami@hotmail.com](mailto:PsiChimiami@hotmail.com)

## Welcome Back!

Welcome back Psi Chi, Psychology, Psychobiology, and Neuroscience students! We hope you had a productive and successful Fall semester, as well as a restful and enjoyable holiday.

The Fall semester was an active one for Psi Chi, thanks to all of our members and guests who participated in our activities. Thanks go to our sponsor, Kaplan, who hosted a number of workshops including, Building Your Future, Writing a Personal Statement, and the Ten Question Challenge. We also had the pleasure of hosting a forensic psychologist and a graduate student panel to speak to our group.

We hope to see everyone again at the exciting events planned for the Spring. Upcoming events include a guest speaker from the Switchboard of Miami, a Research Panel, a visit to the jail (supervised by a psychologist), workshops on writing and financing your education, and many opportunities to take practice GRE exams. Keep an eye out for the Psi Chi banner in the UC Breezeway, and look for flyers and emails announcing Psi Chi meetings.

## Psi Chi Spring Meeting Schedule

February 2 February 16 March 1 March 22 April 5 and April 19

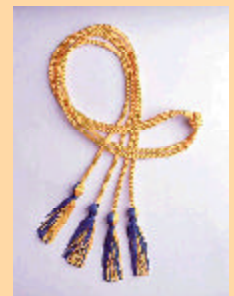
Mondays at 5:30 in UC room 245.

## Psi Chi Points Earn Kaplan Scholarship

Congratulations to **Lauren Brown** who earned the most Psi Chi points and won the GRE Review Scholarship for the Fall semester. As was the case last year, Kaplan Review has donated a \$550 scholarship to the UM Chapter of Psi Chi to be used toward a test-prep class at Kaplan. Lauren won the scholarship by receiving the most points for actively participating in the Fall Psi Chi meetings and activities. Another scholarship will be awarded to an outstanding Psi Chi member for the Spring semester. We encourage everyone to participate in all of Psi Chi's upcoming events to enrich your collegiate experience and earn points toward the scholarship!



## Graduation 2004 Materials



Remember to order Psi Chi graduation materials! Graduation cords are \$10.00 and medallions are \$15.00. If you want to order both, the combined price is \$22.00. To order your graduation materials, contact Psi Chi at [PsiChimiami@hotmail.com](mailto:PsiChimiami@hotmail.com).

Department of Psychology  
Undergraduate Academic Services for Psychology  
P.O. Box 248185  
Coral Gables, FL 33124-0751



165001

# Psychology News

Thanks to . . .

David King, M.Sc.  
Phil McCabe, Ph.D.  
José F. Rodríguez, M.S.Ed.  
Blake Scanlon, B.S.  
Rod Wellens, Ph.D.  
Richard Williams, Ph.D.  
The Psychology Peer Advisors

Editor

Victoria Noriega, Ph.D.

## *In this issue . . .*

Community Lecture Series: Psychology in Film  
Just Desserts  
Hiring UASP Peer Advisors  
Pictures from UCON  
PRIME 2004  
Other Summer Research Opportunities  
What is so important about research?  
Current Research Projects  
December Graduates  
Special Announcements  
Hats off  
The Psi Chi Connection